



Mingo Point Living Shoreline



Nature Based Solutions Manual for Kiawah Island

Funded by NFWF ECRF 2019 with support from NOAA

Stormwater mitigation & marsh protection

Detailed information on ~13 practices

- *Site Selection*
- *Installation*
- *Preparation*
- *Maintenance*
- *Materials*
- *Monitoring*

Provides “blueprints” for ideas

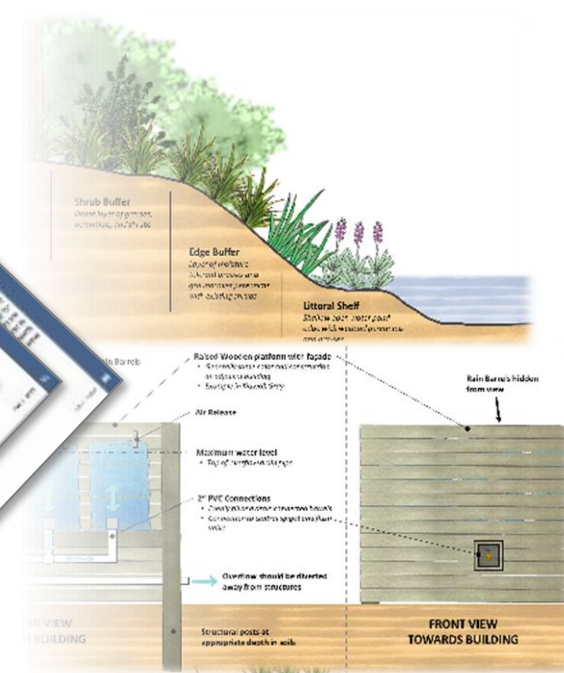
Accessibility + Technical Detail

Applicable to most coastal communities in SC



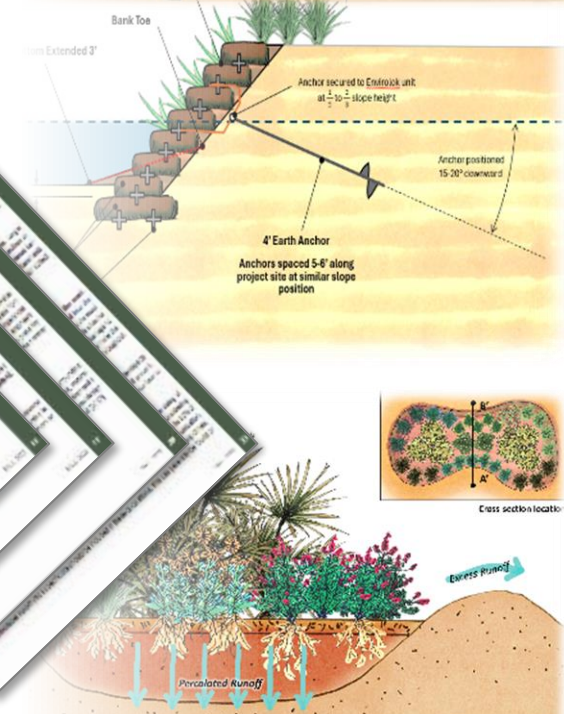
Living Shorelines

6 practices

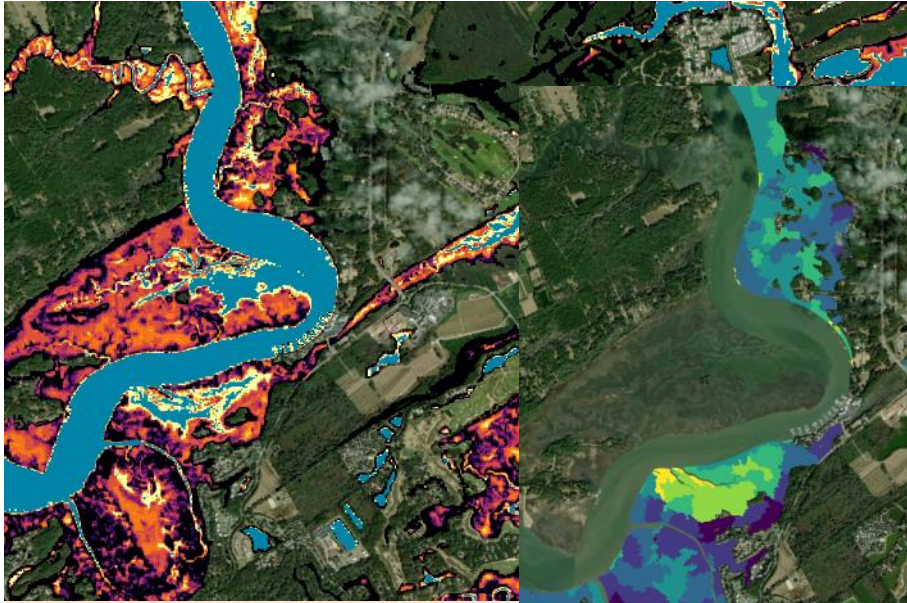


Green Infrastructure / LID

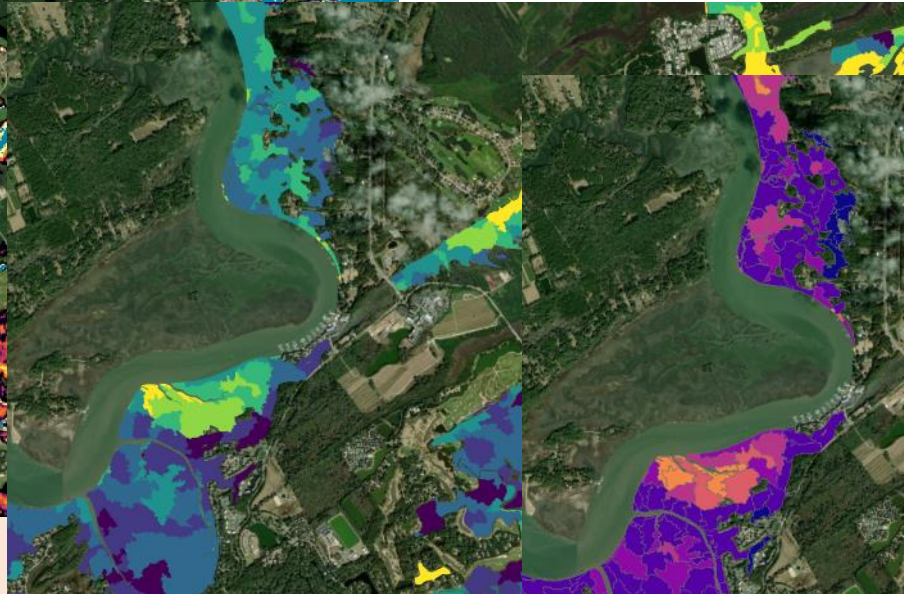
7 practices



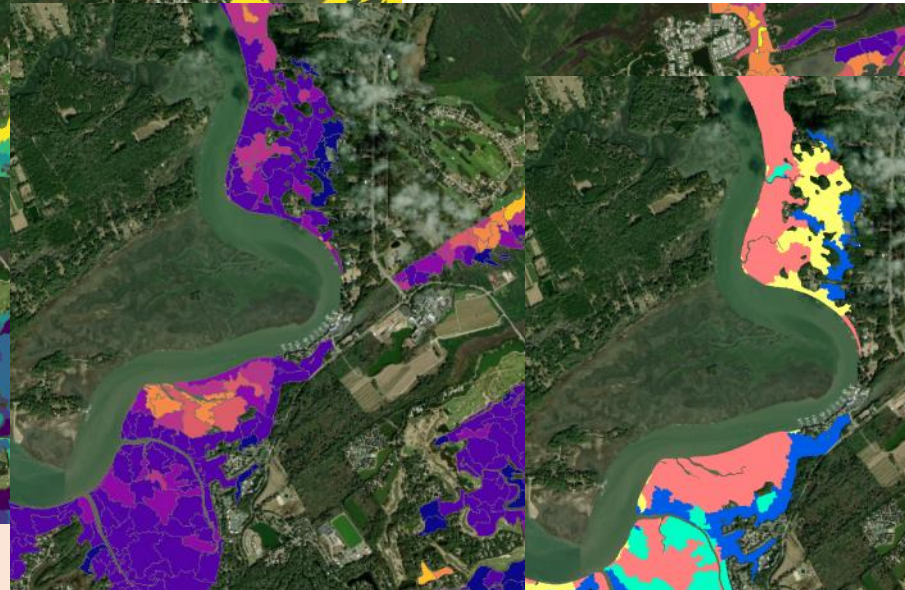
Ecological Health Initiative



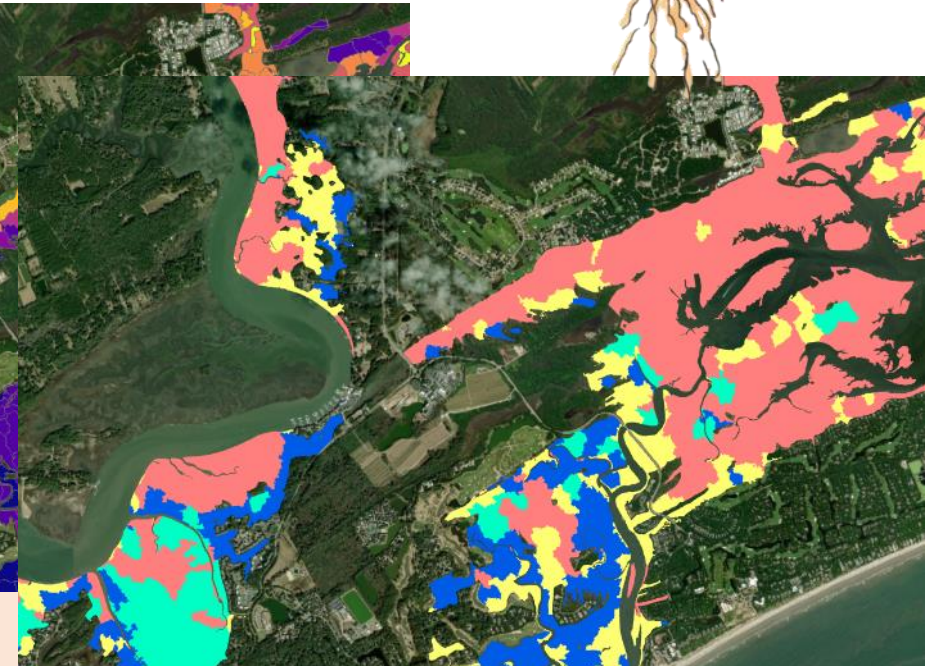
Detailed Analyses



Habitat Conditions



Future Projections



Restoration Planning

Living and non-living components across five (5) habitat types



2050000004

2070000002

2070000009

2001

2050000004

2070000009

2070000002

2023

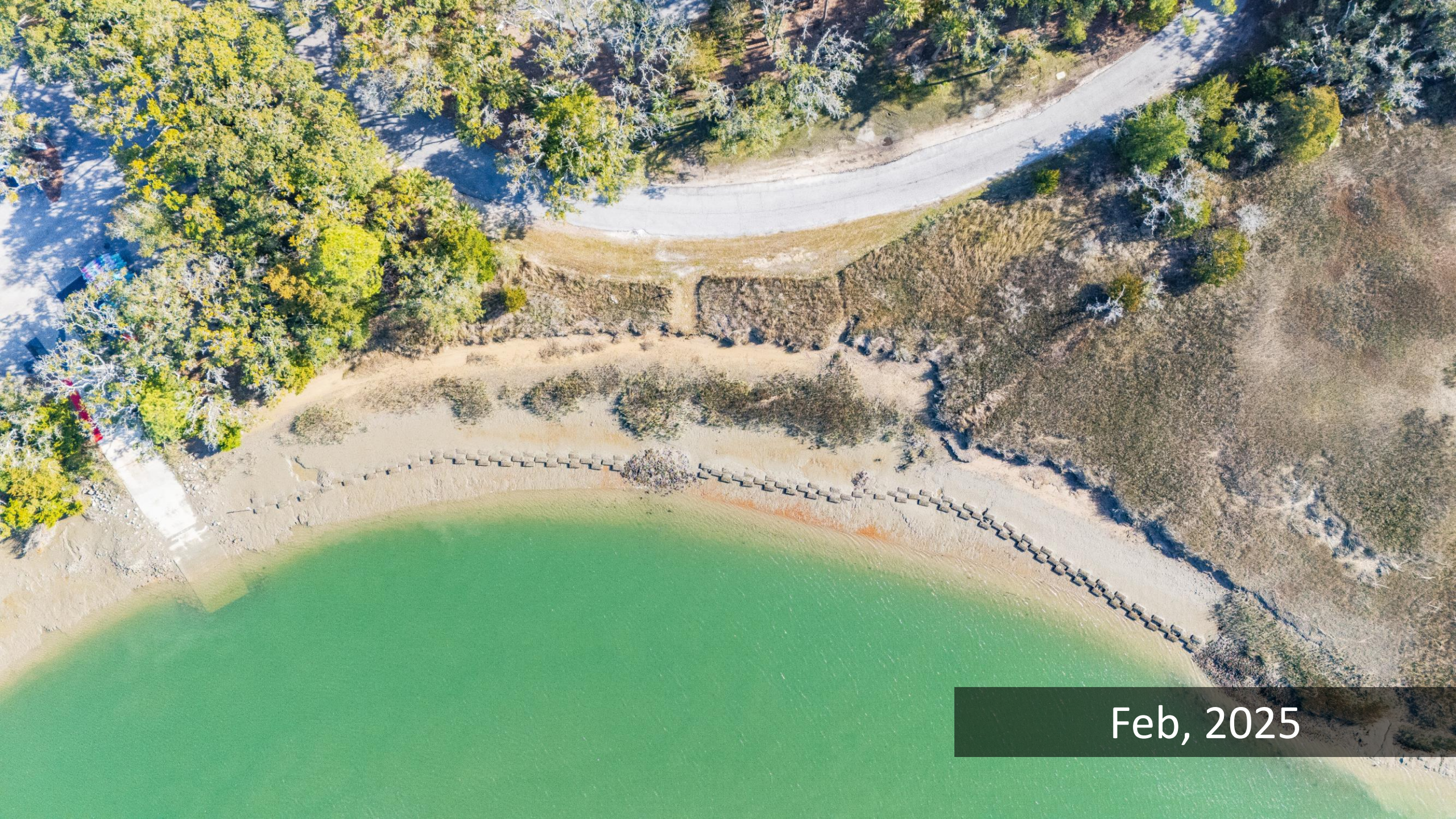




Feb, 2025



Feb, 2025



Feb, 2025

Anticipated Outcomes



2012



2022

Living shorelines have successfully restored large areas of marsh and oyster habitat in the Charleston area. The photos above highlight marsh restoration at Fort Johnson on James Island, where Manufactured Wire Reefs and oyster bags were used. The red lines in the right photo show areas that have been successfully revegetated following the installation.